
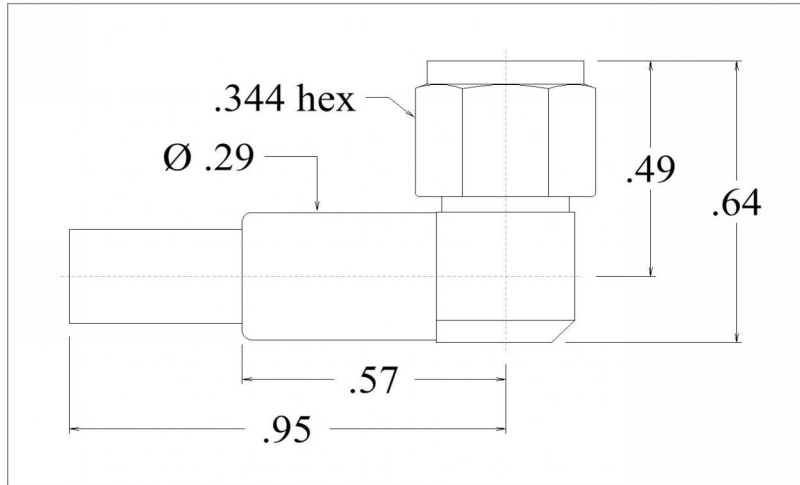


PIC Wire & Cable	Connector Specification	P/N 190768
<i>A Division of the Angelus Corporation</i> Ph (262) 246-0500 Fax (262) 246-0450 www.picwire.com PO Box 330 Sussex, WI 53089	Approved : 	Date : 07/22/16
	Distribution : USER	Rev. 0
		Uncontrolled if Printed

SMC Type (non-standard) 75 Ohm Screw-On Female 90° Plug
for V75268 / V76261 / V73263



PERFORMANCE

Nominal Impedance	75 Ohms
Frequency Range	0 - 3 GHz
Voltage Rating	250 VRMS @ Sea Level
Insulation Resistance	1000 Megohms Min

CONNECTOR WEIGHT (Each)

.35 ounces (9.98 grams)

RoHS COMPLIANT

Complies to RoHS Standards

INSTALLATION

Crimp Tooling:

Center Contact M22520 / 2 - 01 Tool :
Selector Dial @ # 8
Recommended Positioner :
PIC P/N 110918 (Daniels # K1969)

Crimp Ferrule M22520 / 5 - 01 Tool :
Die Set M22520 / 5 - 41
Cavity B (.178 hex)
PIC P/N 110333, (Daniels # Y140)

CONSTRUCTION

Materials:

Body	Brass, ASTM-B16, H02
Center Contact	Beryllium Copper, ASTM-B196
Cable Center Contact	Brass, ASTM-B16, H02
Ferrule	Brass, ASTM-B16, Annealed to Dead Soft
Dielectric	TFE Fluorocarbon, ASTM-D1710

Finish :

Body, Ferrule	Gold
Center Contact	Gold

Notes :

- 1) A 1.5" piece of Raychem ATUM heat shrink P/N ATUM-8/2-0 provided with connector for purpose of strain relief & moisture protection.
- 2) Please refer to T-1907XX Termination Instruction sheet for strip dimensions & instructions.