

Termination Instructions for PIC RJ45 Plug Connector P/N 110506
 (for PIC Ethernet Quad Cable P/N E51424)

Required Tooling :	PIC P/N 110288 Crimp Tool (Sentinel P/N 900007), Heat Gun
Recommended Hand Tools :	X-acto Knife, Sharp Razor, Wire Cutters, Locking Tab Heat Shield, Eye Loupe / Magnifier

All Dimensions in inches - Not to Scale

- 1) Install Labels (if applicable), install ATUM 12/3 Heat shrink (larger dia), then ATUM 8/2 shrink tube (smaller dia) onto the cable.
- 2) Make Cut A @ 0.80" from end, through Jacket only. DO NOT nick or cut into the braids. Remove the jacket (Fig 1).
- 3) Shrink ATUM 8/2 (smaller dia tubing) onto cable, starting at end of the jacket (Fig 1).
- 4) Flare the wire braid out. Fold the wire braid back over the jacket as shown (Fig 2). Flare the strip braid out and fold back over the wire braid (Fig 2). Remove the (Teflon) tape up to braids completely exposing wires. Move wires to allow the filler rod (in the middle of the wires) to be trimmed off as short as possible.
- 5) Arrange the wires to the desired configuration and install into the Load Bar, in preparation for insertion into the connector. Trim wires evenly @ .750" as shown (Fig 3), with sharp wire cutters.
- 6) Bend the connector strain relief tab down, to allow entry for wires. Install wires into the connector body, keeping alignment intact. To complete full insertion, push while gripping folded braids. Proper insertion is indicated by viewing ALL of the wire conductors through the front end of the connector body. Use Magnifier if needed.
- 7) Bend the connector strain relief tab back up to original position, keeping braids within the strain relief tab.
- 8) Verify full insertion before crimping the connector. Crimp using PIC P/N 110288 crimp tool. Trim any braids past the end of the crimped strain relief tab (Fig 4).
- 9) Temporarily shield the RJ45 latching tab from excessive heat while shrinking the ATUM 12/3 shrink tube, using aluminum foil or similar material as a heat shield. Shrink starting at the front end of the connector cavity (opening in shield) on the top of the connector as shown (Fig 5). The ATUM 12/3 should cover the rear of the connector and onto the cable. Verify that the shrink does not impede full travel of the Latching Tab on the bottom of the connector.

Figure 1

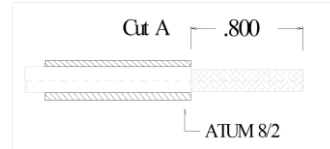


Figure 2

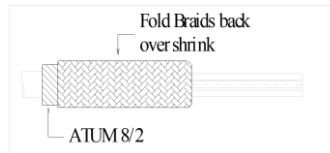


Figure 3

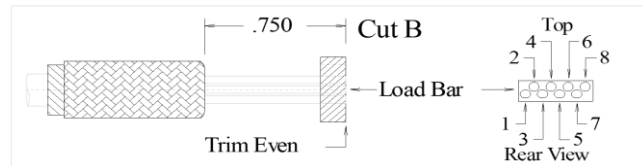


Figure 4

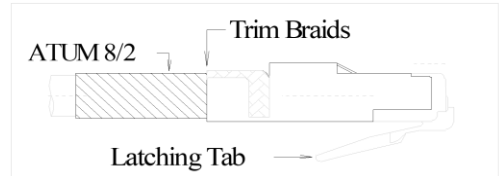


Figure 5

