

EXPORT CONTROL STATEMENT:
 PUBLIC DISCLOSURE OF ANY INFORMATION TO FOREIGN PERSON, WHETHER IN THE UNITED STATES OR ABROAD, MARKED AS INDICATED ABOVE MAY BE PROHIBITED BY THE TRADE SECRETS ACT (18 U.S.C. SEC 1905), THE ECONOMIC ESPIONAGE ACT OF 1996 (18 U.S.C. 1831 ET SEQ.), AND INTERNATIONAL TRAFFIC IN ARMS REGULATIONS (ITAR). THIS DOCUMENT IS NOT TO BE MADE AVAILABLE WITHOUT PRIOR EXPRESS WRITTEN PERMISSION OF PIC WIRE & CABLE.

REVISION HISTORY			
REV	DESCRIPTION	DATE	APPROVED
0	INITIAL RELEASE	6/05/2024	S. SKIBINSKI

NOTES

- ALL ASSEMBLY WORK TO BE PERFORMED PER ANG-MFG-WI-00258 UNLESS OTHERWISE NOTED.
- SOLDERING TO BE PERFORMED PER IPC-J-STD-001, AS APPLICABLE.
- WORKMANSHIP TO BE PERFORMED PER IPC-A-620, CLASS 2.
- PIC SHIPSET NUMBER 11012-4980 INCLUDES ALL -WXYZZZ CABLES ON THIS DWG. TO ORDER INDIVIDUAL CABLE(S), SPECIFY ASSEMBLY DASH NUMBER(S) (E.G. -110100-01, -120100-07, ETC.) SEE SHEET 4 FOR NUMBERING SCHEME.
- LABELS ARE PER SAE-AMS-DTL-23053/5-1XX (CLASS 1). COVER LABELS WITH CLEAR HEAT SHRINK PER SAE-AMS-DTL-23053/5-2XX-C (CLASS 2 - CLEAR). LENGTH AND SIZE OF LABELS & CLEAR SHRINK AS REQUIRED. XXXXXX ON LABEL = PIC WIRE & CABLE SERIAL NUMBER, AS APPLICABLE.

6 UNLESS OTHERWISE SPECIFIED:
 FOR ALL ASSEMBLIES, APPLY LABELS AT END A, CENTER AND END B AS SPECIFIED. (REGARDLESS OF LENGTH).

7 CUT LENGTH IS CABLE ASSEMBLY LENGTH MINUS 0.5", EG: IF CABLE ASSEMBLY LENGTH IS 50", CUT LENGTH WILL BE 49.5"

- INCLUDE APPROPRIATE TEST DOCUMENTATION WITH EACH SHIPMENT. TEST REQUIREMENTS FOR ASSEMBLIES -01 THRU -03:
 TEST FREQUENCY RANGE: 4000 MHz TO 6000 MHz.
 VSWR: 1.5:1 MAX AT 5000 MHz.
 INSERTION LOSS: 8 dB MAX AT 5000 MHz.
- TEST REQUIREMENTS FOR ASSEMBLIES -04 THRU -06:
 TEST FREQUENCY RANGE: 1000 MHz TO 3000 MHz.
 VSWR: 1.5:1 MAX AT 2400 MHz.
 INSERTION LOSS: 5 dB MAX AT 2400 MHz.
- TEST REQUIREMENTS FOR ASSEMBLIES -07 THRU -14:
 TEST FREQUENCY RANGE: 800 MHz TO 1000 MHz.
 VSWR: 1.5:1 MAX AT 900 MHz.
 INSERTION LOSS: 3 dB MAX AT 900 MHz.

ITEM NO	PART NO	DESCRIPTION	QTY													
PARTS LIST			-01	-02	-03	-04	-05	-06	-07	-08	-09	-10	-11	-12	-13	-14
30	RNF-100-XXX-CL	TE SHRINK TUBE, CLEAR	A/R	A/R	A/R	A/R	A/R	A/R	A/R	A/R	A/R	A/R	A/R	A/R	A/R	A/R
29	TTMS-XX-XX.X-9	TE LABEL SHRINK TUBE, WHITE	A/R	A/R	A/R	A/R	A/R	A/R	A/R	A/R	A/R	A/R	A/R	A/R	A/R	A/R
28	150409	TNC 90° PLUG CONNECTOR	-	-	-	-	-	-	A/R	A/R	A/R	A/R	A/R	A/R	A/R	A/R
27	150509	TNC 90° PLUG CONNECTOR	-	-	-	-	-	-	A/R	A/R	A/R	A/R	A/R	A/R	A/R	A/R
26	150109	TNC 90° PLUG CONNECTOR	-	-	-	-	-	-	A/R	A/R	A/R	A/R	A/R	A/R	A/R	A/R
25	190409	TNC 90° PLUG CONNECTOR	-	-	-	-	-	-	A/R	A/R	A/R	A/R	A/R	A/R	A/R	A/R
24	190609	TNC 90° PLUG CONNECTOR	-	-	-	-	-	-	A/R	A/R	A/R	A/R	A/R	A/R	A/R	A/R
23	190309	TNC 90° PLUG CONNECTOR	-	-	-	-	-	-	A/R	A/R	A/R	A/R	A/R	A/R	A/R	A/R
22	190809	TNC 90° PLUG CONNECTOR	-	-	-	-	-	-	A/R	A/R	A/R	A/R	A/R	A/R	A/R	A/R
21	150408	TNC STRAIGHT PLUG CONNECTOR	-	-	-	-	-	-	A/R	A/R	A/R	A/R	A/R	A/R	A/R	A/R
20	150508	TNC STRAIGHT PLUG CONNECTOR	-	-	-	-	-	-	A/R	A/R	A/R	A/R	A/R	A/R	A/R	A/R
19	150108	TNC STRAIGHT PLUG CONNECTOR	-	-	-	-	-	-	A/R	A/R	A/R	A/R	A/R	A/R	A/R	A/R
18	190408	TNC STRAIGHT PLUG CONNECTOR	-	-	-	-	-	-	A/R	A/R	A/R	A/R	A/R	A/R	A/R	A/R
17	190608	TNC STRAIGHT PLUG CONNECTOR	-	-	-	-	-	-	A/R	A/R	A/R	A/R	A/R	A/R	A/R	A/R
16	190308	TNC STRAIGHT PLUG CONNECTOR	-	-	-	-	-	-	A/R	A/R	A/R	A/R	A/R	A/R	A/R	A/R
15	190808	TNC STRAIGHT PLUG CONNECTOR	-	-	-	-	-	-	A/R	A/R	A/R	A/R	A/R	A/R	A/R	A/R
14	150414	SMA STRAIGHT PLUG CONNECTOR	A/R	A/R	A/R	A/R	A/R	A/R	-	-	-	-	-	-	-	-
13	150514	SMA STRAIGHT PLUG CONNECTOR	A/R	A/R	A/R	A/R	A/R	A/R	-	-	-	-	-	-	-	-
12	150114	SMA STRAIGHT PLUG CONNECTOR	A/R	A/R	A/R	A/R	A/R	A/R	-	-	-	-	-	-	-	-
11	190614	SMA STRAIGHT PLUG CONNECTOR	A/R	A/R	A/R	A/R	A/R	A/R	-	-	-	-	-	-	-	-
10	190314	SMA STRAIGHT PLUG CONNECTOR	A/R	A/R	A/R	A/R	A/R	A/R	-	-	-	-	-	-	-	-
9	190814	SMA STRAIGHT PLUG CONNECTOR	A/R	A/R	A/R	A/R	A/R	A/R	-	-	-	-	-	-	-	-
8	UH25107	50 OHM ULTRA LIGHT COAXIAL CABLE	-	-	-	-	-	-	A/R	A/R	A/R	A/R	A/R	A/R	A/R	A/R
7	UH22089	50 OHM ULTRA LIGHT COAXIAL CABLE	A/R	A/R	A/R	A/R	A/R	A/R	A/R	A/R	A/R	A/R	A/R	A/R	A/R	A/R
6	UH67163	50 OHM ULTRA LIGHT COAXIAL CABLE	A/R	A/R	A/R	A/R	A/R	A/R	A/R	A/R	A/R	A/R	A/R	A/R	A/R	A/R
5	UH44193	50 OHM ULTRA LIGHT COAXIAL CABLE	A/R	A/R	A/R	A/R	A/R	A/R	A/R	A/R	A/R	A/R	A/R	A/R	A/R	A/R
4	S22089	50 OHM LOW LOSS COAXIAL CABLE	-	-	-	-	-	-	A/R	A/R	A/R	A/R	A/R	A/R	A/R	A/R
3	S55122	50 OHM LOW LOSS COAXIAL CABLE	A/R	A/R	A/R	A/R	A/R	A/R	A/R	A/R	A/R	A/R	A/R	A/R	A/R	A/R
2	S33141	50 OHM LOW LOSS COAXIAL CABLE	A/R	A/R	A/R	A/R	A/R	A/R	A/R	A/R	A/R	A/R	A/R	A/R	A/R	A/R
1	S86208	50 OHM LOW LOSS COAXIAL CABLE	A/R	A/R	A/R	A/R	A/R	A/R	A/R	A/R	A/R	A/R	A/R	A/R	A/R	A/R

UNLESS OTHERWISE SPECIFIED, DRAWING UNITS ARE IN INCHES

GENERAL TOLERANCES	ASSEMBLY LENGTH TOLERANCES
X.X ±1.0	UNDER 18 +1/-0
X.XX ±0.50	18 TO 48 +2/-0
X.XXX ±0.250	OVER 48 +3/-0
ANGLE ±5.0°	

SIGNATURES ON FILE

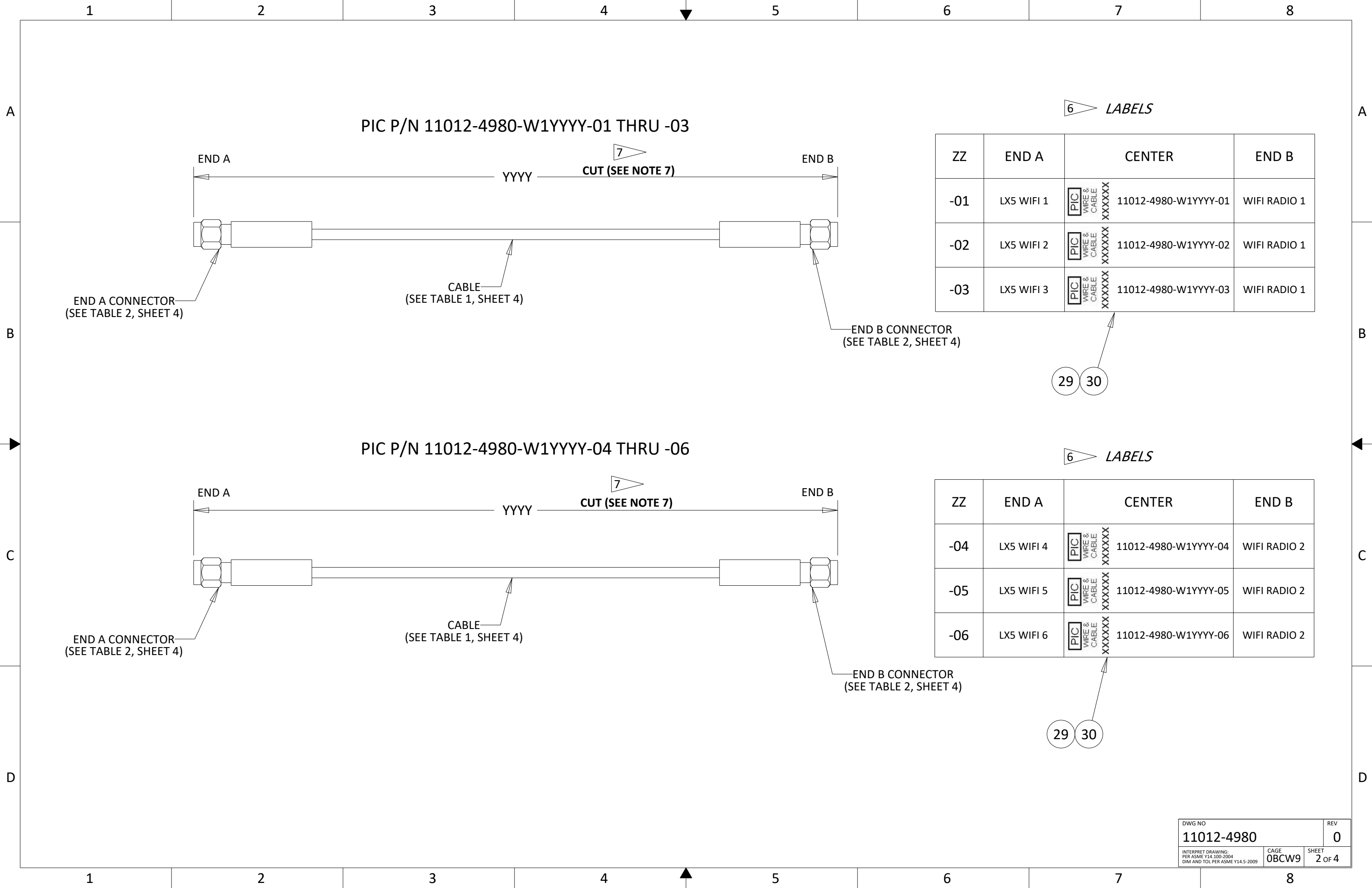
ISSUED R. ESTERHUIZEN	DATE 6/05/2024
CHECKED F. BISHARA	DATE 6/05/2024
APPROVED S. SKIBINSKI	DATE 6/05/2024

UNLESS OTHERWISE SPECIFIED, DRAWING IS IN THIRD ANGLE PROJECTION (US STANDARD)

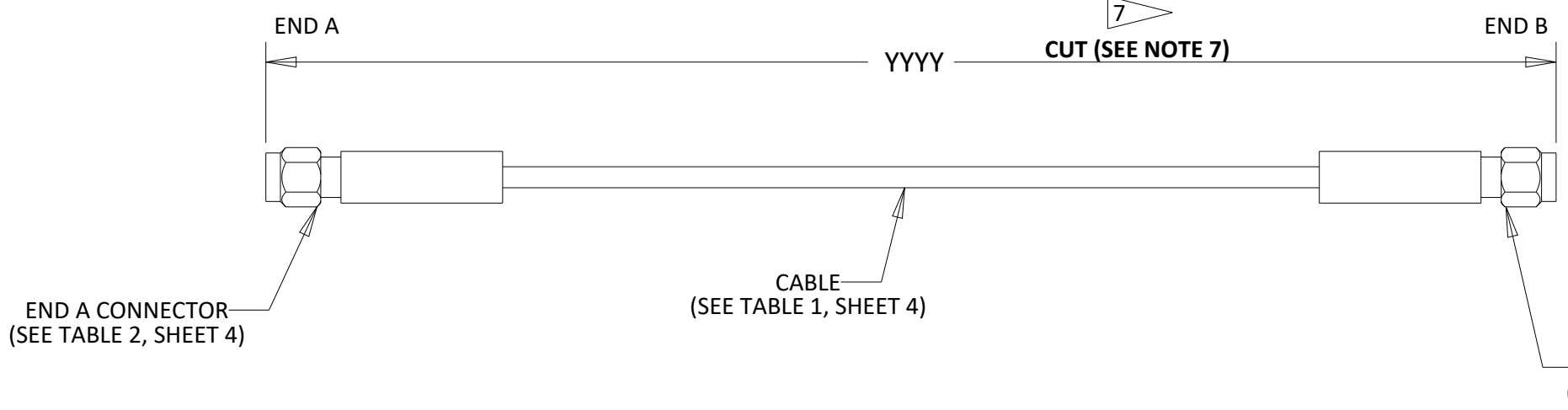
PIC WIRE & CABLE W220 N1051 Springdale Rd. Waukesha, WI 53186
 Phone: 800.742.3191 www.PICwire.com

TITLE: **GOGO BUSINESS AVIATION AVANCE LX5 CABLE ASSEMBLIES**

PROPRIETARY NOTICE: THIS DOCUMENT AND THE INFORMATION CONTAINED WITHIN ARE PROPRIETARY DATA OF PIC WIRE & CABLE. NEITHER THIS DOCUMENT NOR THE INFORMATION CONTAINED WITHIN SHALL BE USED, REPRODUCED, OR DISCLOSED WITHOUT WRITTEN AUTHORIZATION OF PIC WIRE & CABLE.	DWG NO 11012-4980	REV 0
INTERPRET DRAWING: PER ASME Y14.100-2004 DIM AND TOL PER ASME Y14.5-2009	CAGE OBCW9	SHEET 1 OF 4



PIC P/N 11012-4980-W1YYYY-01 THRU -03

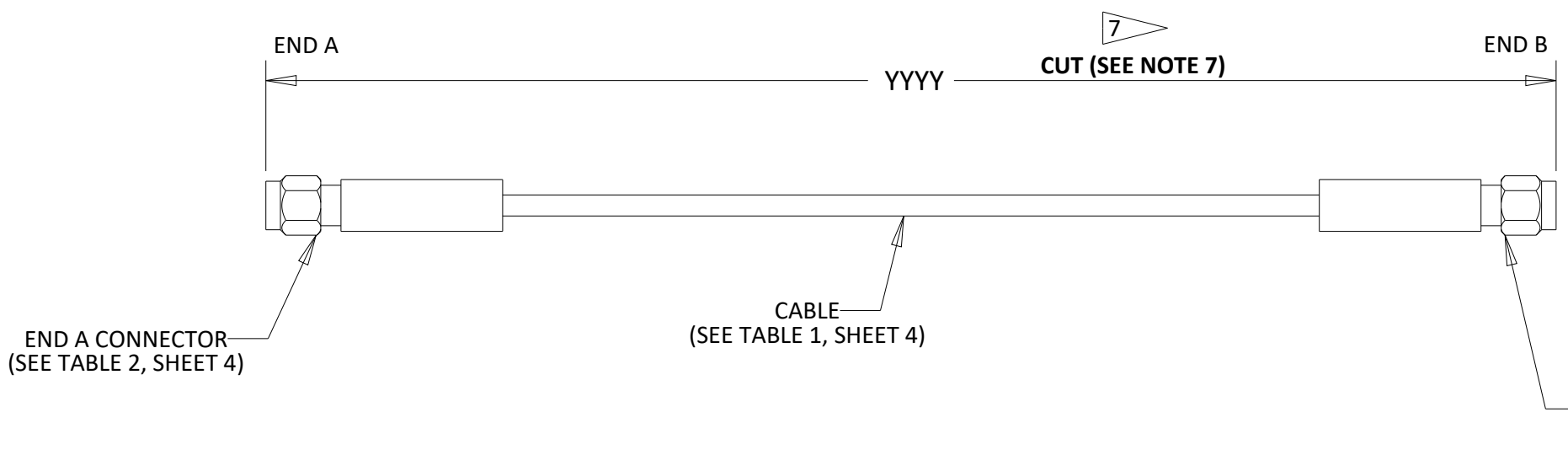


6 LABELS

ZZ	END A	CENTER	END B
-01	LX5 WIFI 1	PIC WIRE & CABLE XXXXXX 11012-4980-W1YYYY-01	WIFI RADIO 1
-02	LX5 WIFI 2	PIC WIRE & CABLE XXXXXX 11012-4980-W1YYYY-02	WIFI RADIO 1
-03	LX5 WIFI 3	PIC WIRE & CABLE XXXXXX 11012-4980-W1YYYY-03	WIFI RADIO 1

29 30

PIC P/N 11012-4980-W1YYYY-04 THRU -06

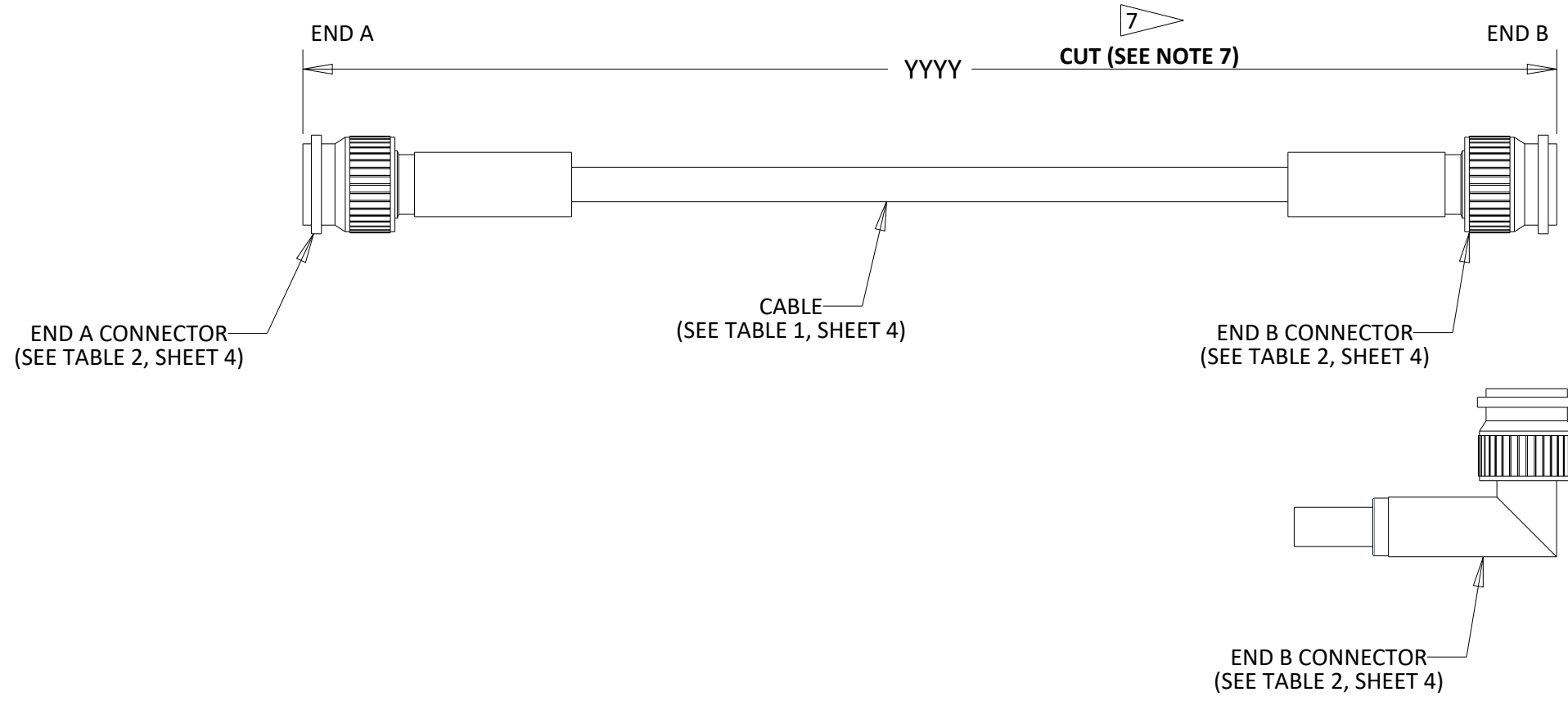


6 LABELS

ZZ	END A	CENTER	END B
-04	LX5 WIFI 4	PIC WIRE & CABLE XXXXXX 11012-4980-W1YYYY-04	WIFI RADIO 2
-05	LX5 WIFI 5	PIC WIRE & CABLE XXXXXX 11012-4980-W1YYYY-05	WIFI RADIO 2
-06	LX5 WIFI 6	PIC WIRE & CABLE XXXXXX 11012-4980-W1YYYY-06	WIFI RADIO 2

29 30

PIC P/N 11012-4980-WXYYYY-07 THRU -14



6 LABELS

ZZ	END A	PIC WIRE & CABLE XXXXXX	CENTER	END B
-07	LX5 FWD ANT-J1	PIC WIRE & CABLE XXXXXX	11012-4980-WXYYYY-07	FWD MB13 ANT-J1
-08	LX5 FWD ANT-J3	PIC WIRE & CABLE XXXXXX	11012-4980-WXYYYY-08	FWD MB13 ANT-J3
-09	LX5 AFT ANT-J1	PIC WIRE & CABLE XXXXXX	11012-4980-WXYYYY-09	AFT MB13 ANT-J1
-10	LX5 AFT ANT-J3	PIC WIRE & CABLE XXXXXX	11012-4980-WXYYYY-10	AFT MB13 ANT-J3
-11	LX5 FWD ANT-J4	PIC WIRE & CABLE XXXXXX	11012-4980-WXYYYY-11	FWD MB13 ANT-J4
-12	LX5 FWD ANT-J2	PIC WIRE & CABLE XXXXXX	11012-4980-WXYYYY-12	FWD MB13 ANT-J2
-13	LX5 AFT ANT-J4	PIC WIRE & CABLE XXXXXX	11012-4980-WXYYYY-13	AFT MB13 ANT-J4
-14	LX5 AFT ANT-J2	PIC WIRE & CABLE XXXXXX	11012-4980-WXYYYY-14	AFT MB13 ANT-J2

29 30

PART NUMBERING = 11012-4980-WXYYYY-ZZ

X = CONNECTOR CONFIGURATIONS (SEE TABLE 2)			YYYY = LENGTH IN INCHES	
X VALUE	END A	END B	"YYYY" VALUE	LENGTH (IN)
1	SMA STR. PLUG	SMA STR. PLUG	0001	1"
2	TNC STR. PLUG	TNC STR. PLUG	----	----
3	TNC STR. PLUG	TNC 90° PLUG	9999	9999"

W = COAX CABLE (SEE TABLE 1) "W" VALUE	COAX CABLE	TABLE 1 MAX. CABLE LENGTH PER APPLICATION (LENGTH IN INCHES)			TABLE 2 CONNECTOR P/N'S			
		AVANCE LX5 WIFI RADIO 1 (5.0 GHz)	AVANCE LX5 WIFI RADIO 2 (2.4 GHz)	AVANCE LX5 TO FWD/AFT MB13 ANT. (0.9 GHz)	SMA STR. PLUG	TNC STR. PLUG	TNC 90° PLUG	TTMS (FOR REF. ONLY)
		MAX. LOSS (8 dB)	MAX. LOSS (5 dB)	MAX. LOSS (3 dB)				
1	S86208	255	228	219	190814	190808	190809	4.8 LABEL - 3/16" CLEAR
2	S33141	527	475	460	190314	190308	190309	9.5 LABEL - 3/8" CLEAR
3	S55122	685	622	607	190614	190608	190609	9.5 LABEL - 1/2" CLEAR
4	S22089	N/A	N/A	889	N/A	190408	190409	12.7 LABEL - 3/4" CLEAR
5	UH44193	334	302	294	150114	150108	150109	4.8 LABEL - 1/4" CLEAR
6	UH67163	567	515	501	150514	150508	150509	9.5 LABEL - 3/8" CLEAR
7	UH22089	1003	911	890	150414	150408	150409	12.7 LABEL - 1/2" CLEAR
8	UH25107	N/A	N/A	1114	N/A	190408	190409	12.7 LABEL - 3/4" CLEAR

ZZ = SUB SYSTEM DESIGNATOR		
"ZZ" VALUE	FROM	TO
01	LX5 WIFI 1	WIFI RADIO 1
02	LX5 WIFI 2	WIFI RADIO 1
03	LX5 WIFI 3	WIFI RADIO 1
04	LX5 WIFI 4	WIFI RADIO 2
05	LX5 WIFI 5	WIFI RADIO 2
06	LX5 WIFI 6	WIFI RADIO 2
07	LX5 FWD ANT-J1	FWD MB13 ANT-J1
08	LX5 FWD ANT-J3	FWD MB13 ANT-J3
09	LX5 AFT ANT-J1	AFT MB13 ANT-J1
10	LX5 AFT ANT-J3	AFT MB13 ANT-J3
11	LX5 FWD ANT-J4	FWD MB13 ANT-J4
12	LX5 FWD ANT-J2	FWD MB13 ANT-J2
13	LX5 AFT ANT-J4	AFT MB13 ANT-J4
14	LX5 AFT ANT-J2	AFT MB13 ANT-J2